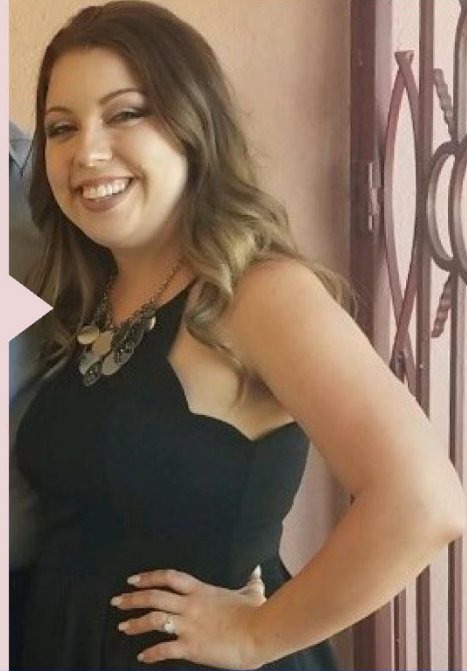




Women IN CONSTRUCTION

Amber Cortez
Office Manager
Nevell Group, inc.

"I knew at a young age, I wanted to be a part of a culture that had meaning. Construction is just that."



PIONEER | COLLABORATE | SUPPORT | CULTIVATE

I knew at a young age, I wanted to be a part of a culture that had meaning. Construction is just that; to assist with projects and see them from the ground to completed, is an amazing feeling.

My advice to younger generations: the possibilities within construction administration/management are endless!

Take in all the information and direction from those around you, as many have lived and learned, sometimes the hard way.

Take constructive criticism in a positive way and look at it as a way to grow as an individual and employee.